

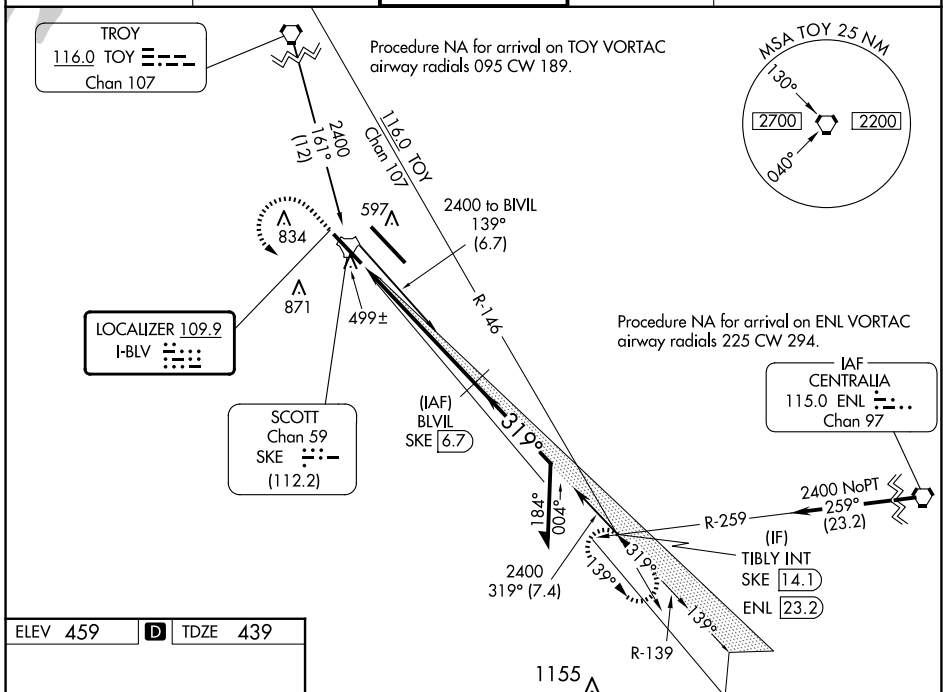
LOC I-BLV 109.9	APP CRS 319°	Rwy Idg 7822
		TDZE 439
		Apt Elev 459

ILS or LOC RWY 32L

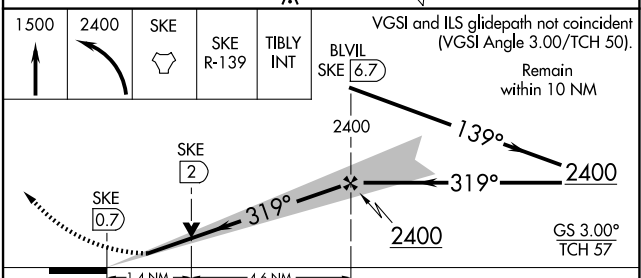
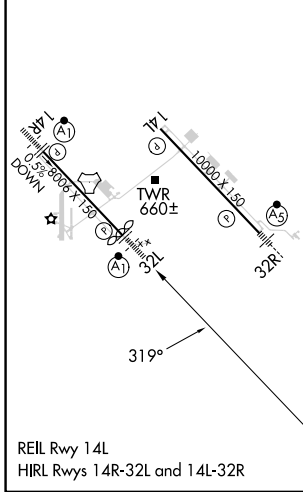
SCOTT AFB/MIDAMERICA ST LOUIS (BLV)

DME required.		ALSF-1 	MISSED APPROACH: Climb to 1500 then climbing left turn to 2400 direct SKE TACAN and on SKE R-139 to TIBLY INT/ SKE 14.1 DME and hold.
For inop ALS, increase S-ILS 32L Cat E visibility to RVR 4000 and increase S-LOC 32L Cat C/D/E visibility to 1/2 SM. Procedure turn NA for Cat E aircraft.	DME from SKE TACAN. Simultaneous reception of I-BLV and SKE DME required.		
ASR *RVR 1800 authorized with use of FD or AP or HUD to DA.			

ATIS * 128.7 256.7	ST LOUIS APP CON 125.2 281.5	SCOTT TOWER 128.25 253.5	GND CON 119.2 275.8	CLNC DEL 119.875 263.025
------------------------------	--	------------------------------------	-------------------------------	------------------------------------



ELEV 459	D	TDZE 439
----------	----------	----------



CATEGORY	A	B	C	D	E
S-ILS 32L*	639/24 200 (200-1/2)				
S-LOC 32L	920/24	481 (500-1/2)	920/50 481 (500-1)		
C CIRCLING	1000-1 541 (600-1)	1120-1 661 (700-1)	1240-2 1/4 781 (800-2 1/4)	1240-2 1/2 781 (800-2 1/2)	1240-2 3/4 781 (800-2 3/4)

EC-3, 15 MAY 2025 to 12 JUN 2025

EC-3, 15 MAY 2025 to 12 JUN 2025