

DIXEE THREE ARRIVAL (RNAV)

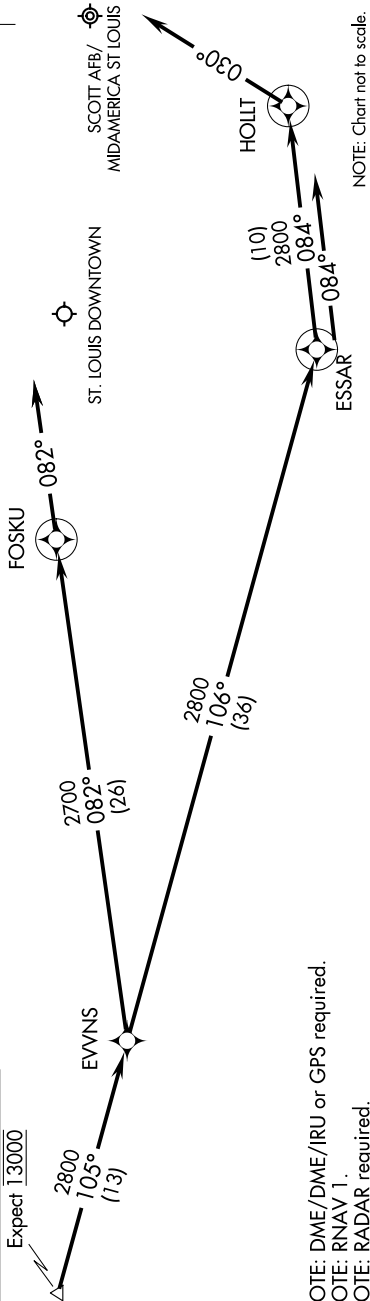
BELLEVILLE, ILLINOIS

EC-3, 15 MAY 2025 to 12 JUN 2025

ST LOUIS APP CON
128.1 307.05
BLV/KBLV ATIS *
128.7 256.7
CFS ATIS
121.45

DIXEE VERTICAL NAVIGATION PLANNING INFORMATION

Expect 13000



NOTE: DME/DME/IRU or GPS required.
NOTE: RNAV 1.
NOTE: RADAR required.

ARRIVAL ROUTE DESCRIPTION

ST. LOUIS DOWNTOWN:

LANDING RWY 12R: From DIXEE on track 105° to EVNS, then on track 082° to FOSKU. Expect radar vector prior to FOSKU. If no heading received, track 082°.

LANDING RWY 30L/R: From DIXEE on track 105° to EVNS, then on track 106° to ESSAR, then on track 084° to HOLLT. Expect radar vector prior to HOLLT. If no heading received, track 030°.

SCOTT AFB/MIDAMERICA ST LOUIS:

LANDING RWYS 14L/R, 32L/R: From DIXEE on track 105° to EVNS, then on track 106° to ESSAR. Expect radar vector prior to ESSAR. If no heading received, track 084°.

DIXEE THREE ARRIVAL (RNAV)

BELLEVILLE, ILLINOIS

EC-3, 15 MAY 2025 to 12 JUN 2025