

WAAS CH 86223 W34A	APP CRS 344°	Rwy ldg TDZE 171 Apt Elev 171	6700
--	------------------------	---	-------------

RNAV (GPS) Y RWY 34

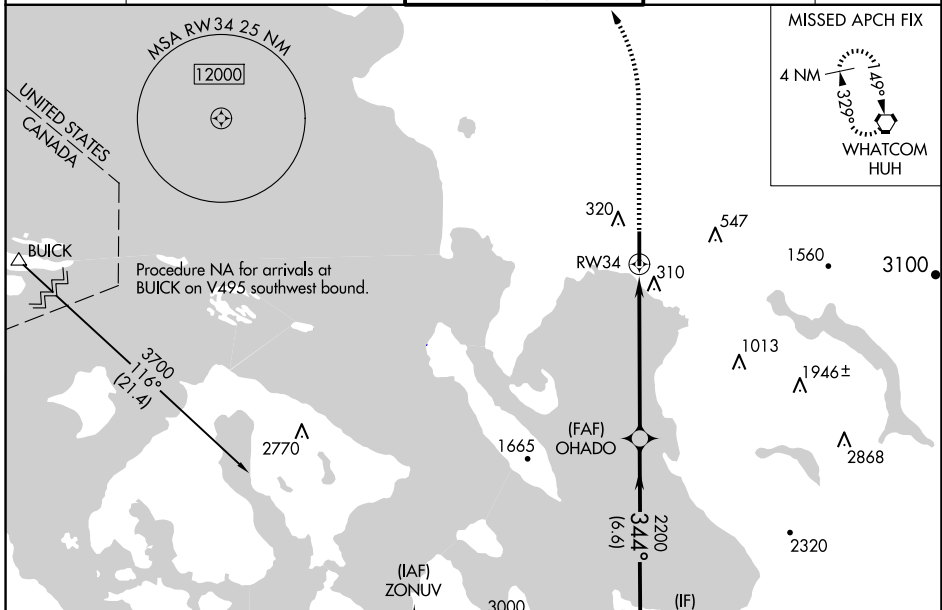
BELLINGHAM INTL (BLI)

RNP APCH - GPS.

For uncompensated Baro-VNAV systems, LNAV/VNAV NA below -10°C or above 54°C.
Baro-VNAV and VDP NA when using Friday Harbor altimeter setting. When local altimeter setting not received, use Friday Harbor altimeter setting and increase all DAs 67 feet and all MDA 80 feet; increase LPV all Cats visibility, LNAV/VNAV all Cats visibility, LNAV Cats C/D and Circling Cat C ¼ mile. Rwy 34 helicopter visibility reduction below ¾ SM NA.

MISSED APPROACH: Climb to 700 then climbing left turn to 3000 direct HUH VORTAC and hold, continue climb-in-hold to 3000.

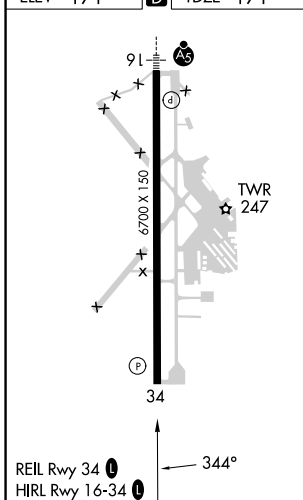
ATIS 134.45	VICTORIA TERMINAL APP CON 132.7 290.8	BELLINGHAM TOWER ★ 124.9 (CTAF) 0 379.3	GND CON 127.4 379.3	UNICOM 122.95
-----------------------	---	---	-------------------------------	-------------------------



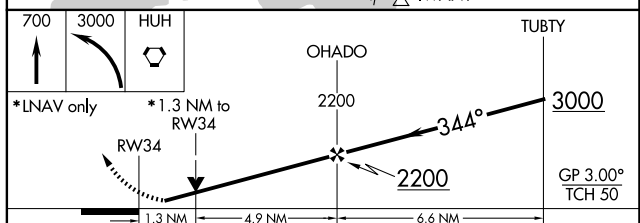
NW-1, 15 MAY 2025 to 12 JUN 2025

NW-1, 15 MAY 2025 to 12 JUN 2025

ELEV 171	D	TDZE 171
----------	----------	----------



Procedure NA for arrivals at BUICK on V495 southwest bound.
Procedure NA for arrivals at OHADO (FAF) on V23 southeast bound.
Procedure NA for arrivals at TUBTY (IF) on V23 southeast bound.
Procedure NA for arrivals at IWANY (IAF) on V23 southeast bound.



CATEGORY	A	B	C	D
LPV DA		421-¾	250 (300-¾)	
LNAV/VNAV DA		503-1½	332 (400-1½)	
LNAV MDA	640-1	469 (500-1)	640-1¾	469 (500-1¾)
C CIRCLING	640-1	469 (500-1)	900-2 729 (800-2)	1160-3 989 (1000-3)