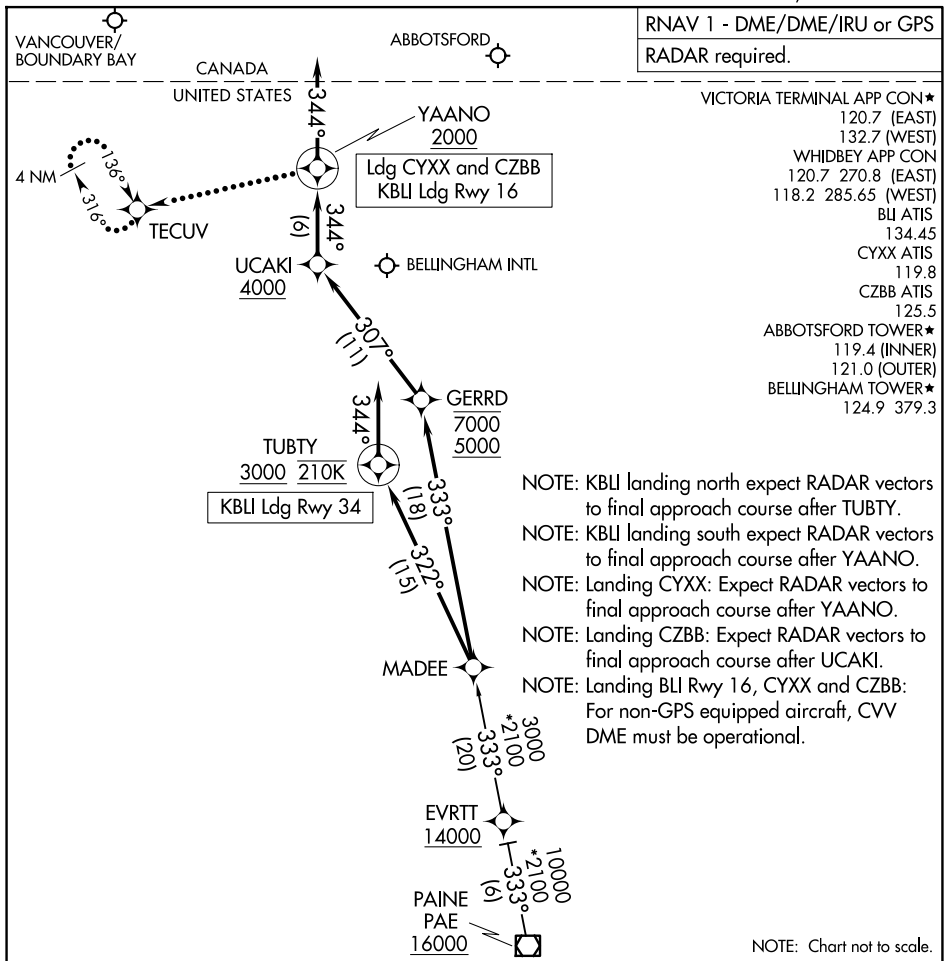


# MADEE FIVE ARRIVAL (RNAV)

AL-45 (FAA)

BELLINGHAM, WASHINGTON



NW-1, 15 MAY 2025 to 12 JUN 2025

NW-1, 15 MAY 2025 to 12 JUN 2025

## ARRIVAL ROUTE DESCRIPTION

### PAINE TRANSITION (PAE.MADEE5)

**LANDING BLI RUNWAY 16:** From MADEE on track 333° to cross GERRD between 5000 and 7000, then on track 307° to cross UCAKI at or above 4000, then on track 344° to cross YAANO at or above 2000, then on track 344°. Expect RADAR vectors to final approach course.

**LANDING BLI RUNWAY 34:** From MADEE on track 322° to cross TUBTY at or above 3000 and at 210K, then on track 344°. Expect RNAV (RNP/GPS) RWY 34 approach or RADAR vectors to final approach course.

**LANDING CZBB/CYXX:** From MADEE on track 333° to cross GERRD between 5000 and 7000, then on track 307° to cross UCAKI at or above 4000, then on track 344° to cross YAANO at or above 2000, then on track 344°. Expect RADAR vectors to final approach course.

### LOST COMMUNICATIONS

**LANDING BLI RUNWAY 16:** After UCAKI conduct RNAV (RNP) Z RWY 16 approach; if unable, proceed to YAANO maintain 2000 and proceed to TECUV and hold.

**LANDING CYXX and CZBB:** After YAANO maintain 2000 and proceed to TECUV and hold.

# MADEE FIVE ARRIVAL (RNAV)

BELLINGHAM, WASHINGTON