

(KLSHN2.KLSHN) 25107

# KLSHN TWO DEPARTURE (RNAV)

AL-45 (FAA)

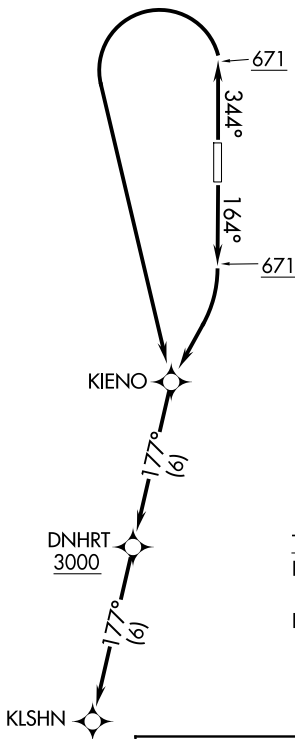
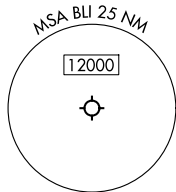
BELLINGHAM INTL (BLI)  
BELLINGHAM, WASHINGTON

**TOP ALTITUDE:  
ASSIGNED BY ATC**

RNAV 1 - DME/DME/IRU or GPS.

RADAR required.

VICTORIA TERMINAL DEP CON  
132.7 290.8  
ATIS  
134.45  
GND CON  
127.4 379.3  
BELLINGHAM TOWER\*  
124.9 379.3



### TAKEOFF MINIMUMS

Rwy 16: Standard with minimum climb of 250'/NM to 2300.  
Rwy 34: Standard with minimum climb of 220'/NM to 2500.

NOTE: Chart not to scale.



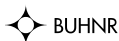
### DEPARTURE ROUTE DESCRIPTION

**TAKEOFF RUNWAY 16:** Climb on heading 164° to 671, then right turn direct KIENO, then on track 177° to cross DNHRT at or above 3000, thence. . . .

**TAKEOFF RUNWAY 34:** Climb on heading 344° to 671, then left turn direct KIENO, then on track 177° to cross DNHRT at or above 3000, thence. . . .

. . . .on track 177° to KLSHN. Maintain ATC assigned altitude. Expect filed altitude within 5 minutes after departure.

**LOST COMMUNICATIONS:** If no transmissions are received for 2 minutes after departure, proceed direct DNHRT, then on last routing cleared.



# KLSHN TWO DEPARTURE (RNAV)

(KLSHN2.KLSHN) 17APR25

BELLINGHAM, WASHINGTON  
BELLINGHAM INTL (BLI)

NW-1, 15 MAY 2025 to 12 JUN 2025

NW-1, 15 MAY 2025 to 12 JUN 2025