

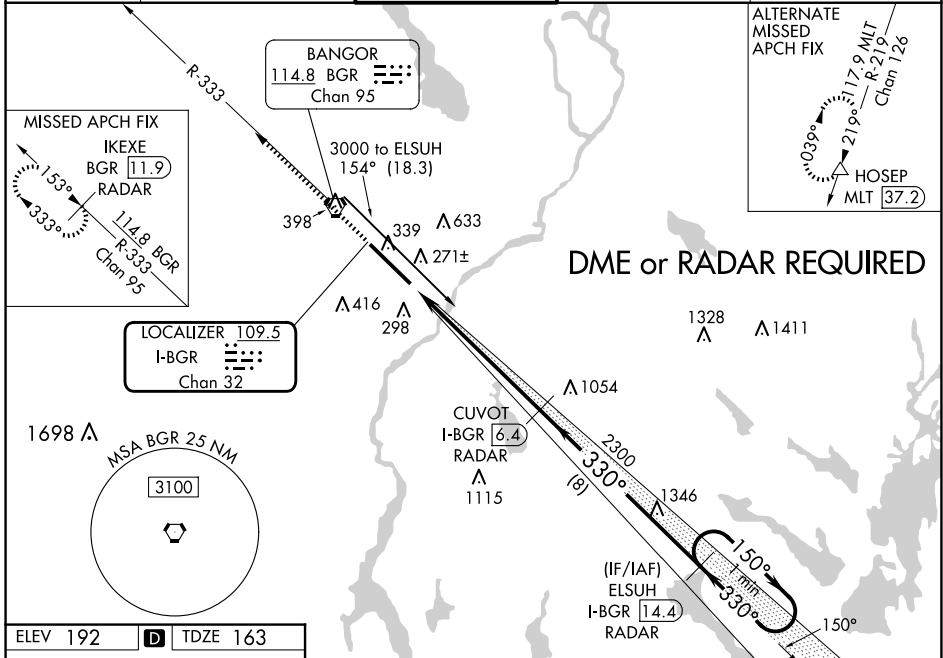
LOC/DME I-BGR 109.5 Chan 32	APP CRS 330°	Rwy Idg 11440 TDZE 163 Apt Elev 192
---	------------------------	--

ILS RWY 33 (SA CAT I & II)

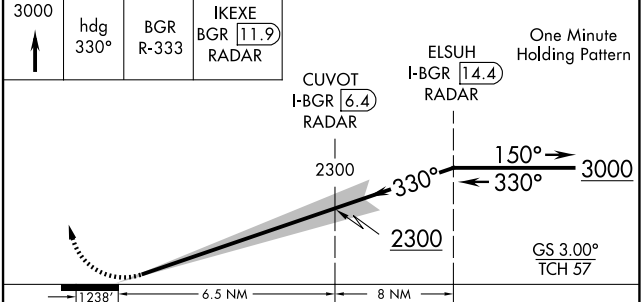
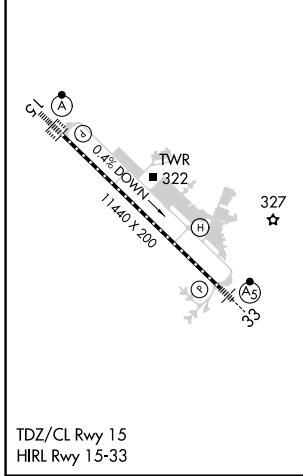
BANGOR INTL (BGR)

	SA CAT I: Requires specific OPSPEC, MSPEC, or LOA approval and use of HUD to DH. SA CAT II: Reduced lighting: requires specific OPSPEC, MSPEC, or LOA approval and use of Autoland or HUD to touchdown.		MISSED APPROACH: Climb to 3000 on heading 330° and on BGR VORTAC R-333 to IKEXE/BGR VORTAC 11.9 DME/RADAR and hold.
	(AS)		

ATIS 127.75	BANGOR APP CON 118.925 239.3	BANGOR TOWER 120.7 233.7	GND CON 121.9 348.6	CLNC DEL 135.9 348.6
-----------------------	--	------------------------------------	-------------------------------	--------------------------------



ELEV 192	D	TDZE 163
----------	----------	----------



CATEGORY	A	B	C	D
S-ILS 33	SA CAT I	RA 173/14	150	DA 313
S-ILS 33	SA CAT II	RA 103/12	100	DA 263

SA CATEGORY I & II ILS - SPECIAL AIRCREW & AIRCRAFT CERTIFICATION REQUIRED

NE-1, 15 MAY 2025 to 12 JUN 2025

NE-1, 15 MAY 2025 to 12 JUN 2025