

COCOA BEACH, FLORIDA

RNAV (GPS) RWY 21

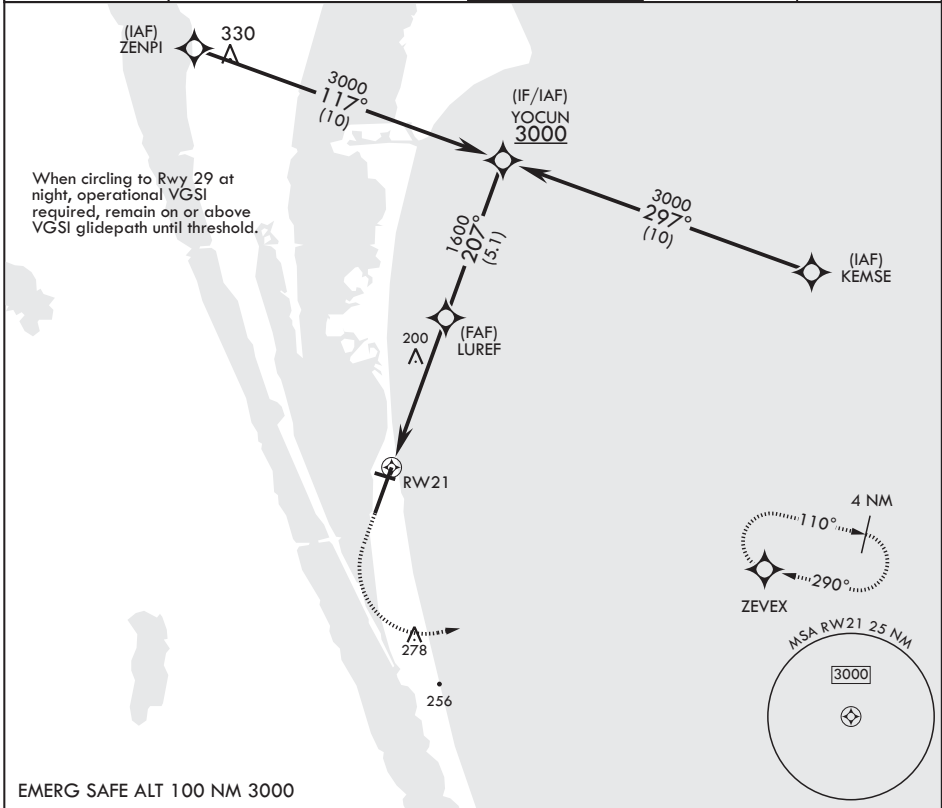
APCH CRS 207°	Rwy Idg 9008
	TDZE 7
	Arprt Elev 8

(USAF)

PATRICK SFB (KCOF)

RNP APCH-GPS	MISSED APPROACH: Climb to 900 then climbing left turn to 3000 direct ZEVEX and hold.
--------------	--

ATIS* 119.175 273.5	ORLANDO APP CON/DEP CON* 132.65 281.425	TOWER* 133.75 269.375	GND CON* 124.35 335.8	CLNC DEL* 118.4 289.4
-------------------------------	---	---------------------------------	---------------------------------	---------------------------------



EMERG SAFE ALT 100 NM 3000

	<p>YOCUN 3000</p> <p>Rwy 29 Idg 3692' 207° TDZE 7</p>				
CATEGORY	A	B	C	D	E
RNAV MDA	460/55	453 (500-1)	460-1½	453 (500-1%)	
CIRCLING*	520-1	512 (600-1)	540-1½ 532 (600-1½)	560-2 552 (600-2)	580-2 572 (600-2)

COCOA BEACH, FLORIDA

28°14'N - 80°37'W

PATRICK SFB (KCOF)

Amdt 1 02NOV23

RNAV (GPS) RWY 21

SE-3, 15 MAY 2025 to 12 JUN 2025

SE-3, 15 MAY 2025 to 12 JUN 2025