

COCOA BEACH, FLORIDA

ILS or LOC RWY 21

LOC I-PKC 110.9	APCH CRS 207°	Rwy ldg TDZE Arpt Elev 9008 7 8
---------------------------	-------------------------	---

[USAF]

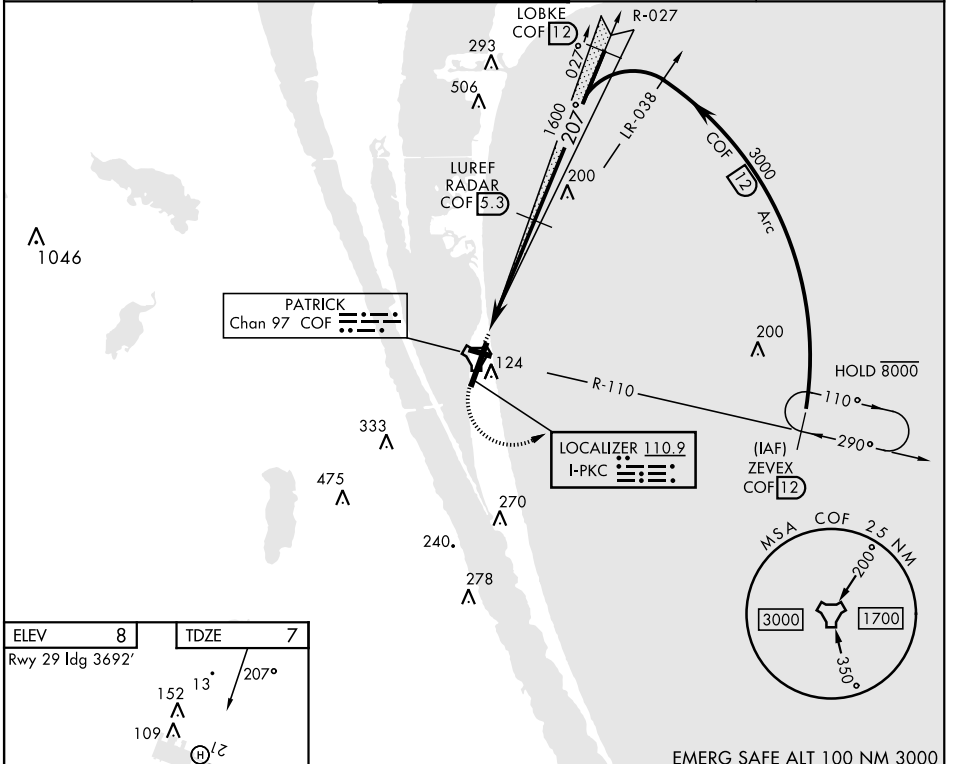
PATRICK SFB (KCOF)

DME required

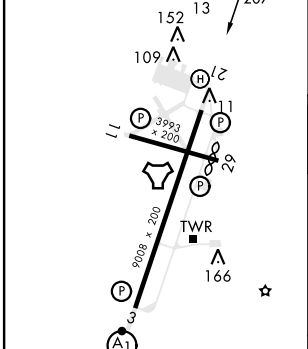
▼ * When circling to Rwy 29 at night, operational VGSI required, remain on or above VGSI glidepath until threshold. Circling not authorized NW of Rwy 3-21.

MISSED APPROACH: Climb to 900, then climbing left turn to 3000 and intercept COF TACAN R-110 direct ZEVEX/12 DME and hold.

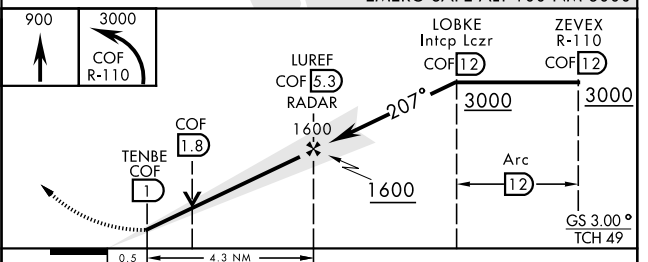
ATIS ★ 119.175 273.5	ORLANDO APP CON★ 132.65 281.425	TOWER★ 133.75 269.375	GND CON★ 124.35 335.8	CLNC DEL★ 118.4 289.4
--------------------------------	---	---------------------------------	---------------------------------	---------------------------------



ELEV 8	TDZE 7
Rwy 29 ldg 3692'	



HIRL Rwy 3-21					
MIRL Rwy 11-29					
FAF to MAP 4.3 NM					
Knots	60	90	120	150	180
Min:Sec	4:18	2:52	2:09	1:43	1:26



EMERG SAFE ALT 100 NM 3000				
CATEGORY	A	B	C	D
S-ILS 21	207/40		200	(200-34)
S-LOC 21	460/55	453 (500-1)	460-1 3/8 453 (500-1 3/8)	560-2
☑ CIRCLING *	520-1	512 (600-1)	540-1 1/2 532 (600-1 1/2)	552 (600-2)

COCOA BEACH, FLORIDA

28° 14' N-80° 37' W

PATRICK SFB (KCOF)

Amdt 3 13JUN24

ILS or LOC RWY 21

SE-3, 15 MAY 2025 to 12 JUN 2025

SE-3, 15 MAY 2025 to 12 JUN 2025