

LOC I-LJU	APP CRS	Rwy Idg	11800
108.5	245°	TDZE	624
		Apr Elev	633


ILS or LOC RWY 25

OSCODA/WURTSMITH (OSC)

DME required.

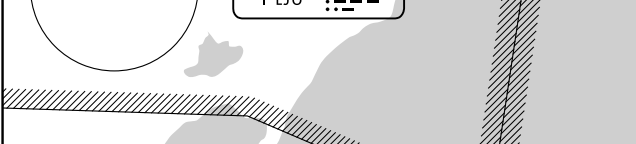
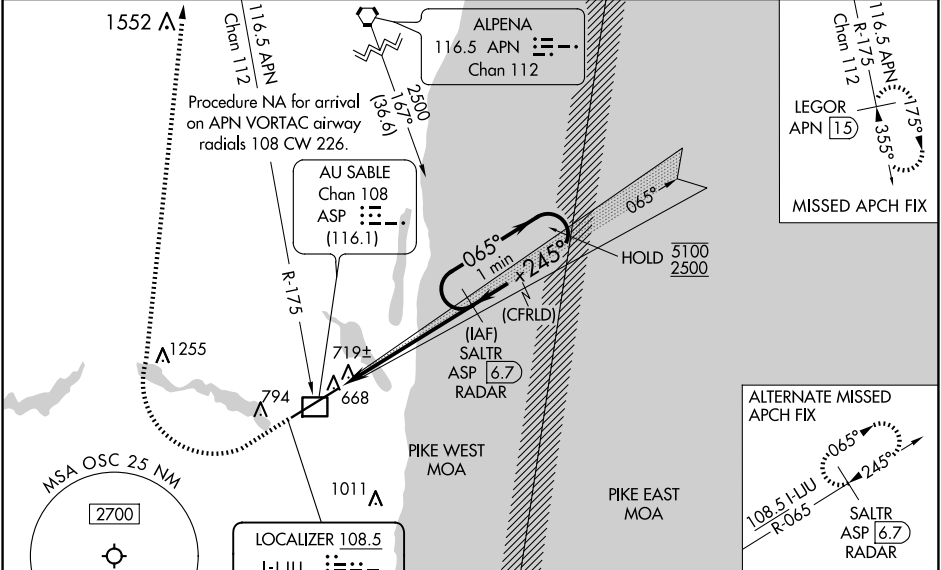
NA Circling NA southeast of Rwy 7-25. For inop ALS, increase S-LOC Cats C and D visibility to 1 SM. DME from ASP DME. Simultaneous reception of I-LJU and ASP DME required.

MALSR

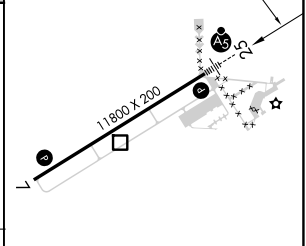
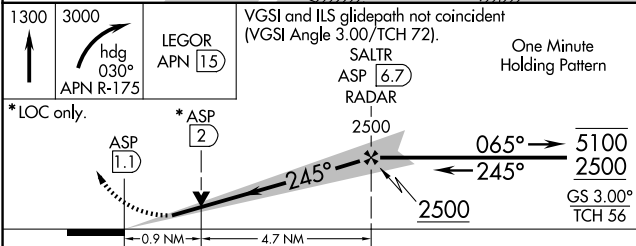


MISSED APPROACH: Climb to 1300 then climbing right turn to 3000 on heading 030° and an APN VORTAC R-175 to LEGOR/APN 15 DME and hold.

AWOS-3 118.7	MINNEAPOLIS CENTER 125.475 269.45	UNICOM 123.0 (CTAF)
------------------------	---	-------------------------------



ELEV 633	TDZE 624
----------	----------



CATEGORY	A	B	C	D
S-ILS 25	824-1/2 200 (200-1/2)			
S-LOC 25	980-1/2 356 (400-1/2)	980-5/8 356 (400-5/8)		
C CIRCLING	1140-1 507 (600-1)	1160-1 1/2 527 (600-1 1/2)	1300-2 667 (700-2)	

REIL Rwy 7

HIRL Rwy 7-25

EC-1, 15 MAY 2025 to 12 JUN 2025

EC-1, 15 MAY 2025 to 12 JUN 2025