

VORTAC ALS <b>113.9</b> Chan <b>86</b>	APP CRS <b>142°</b>	Rwy Idg TDZE Apt Elev <b>7540</b>	<b>N/A</b> <b>N/A</b> <b>7540</b>
--	------------------------	--	---

# VOR-B

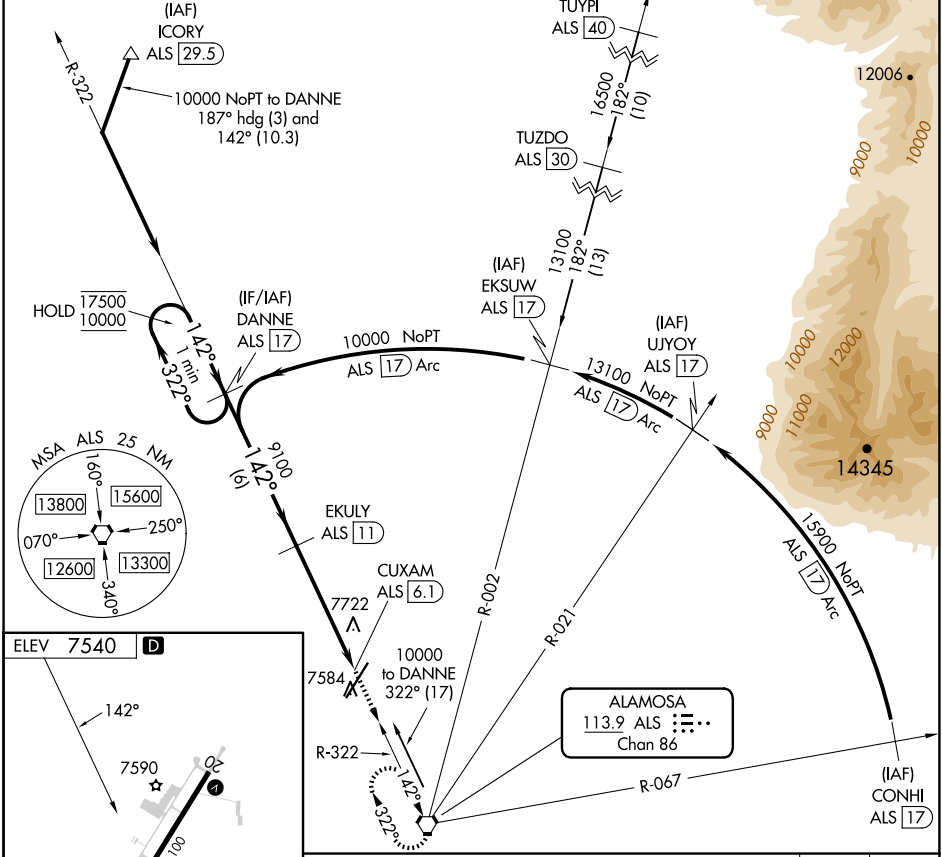
SAN LUIS VALLEY RGNL/BERGMAN FLD (ALS)

DME required. RADAR required for arrivals at TUYPI.

▽  
\* -26°C

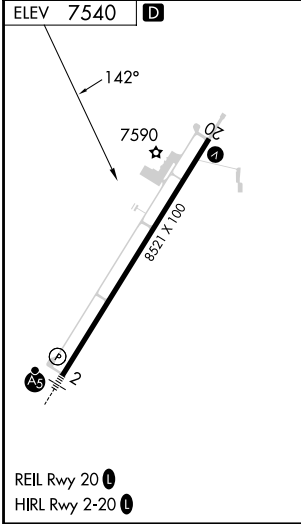
MISSED APPROACH: Climb to 11000 direct ALS VORTAC and hold, continue climb-in-hold to 11000.

ASOS <b>135.175</b>	DENVER CENTER <b>128.375 379.95</b>	UNICOM <b>122.8 (CTAF) 0</b>
------------------------	--	---------------------------------



SW-1, 15 MAY 2025 to 12 JUN 2025

SW-1, 15 MAY 2025 to 12 JUN 2025



One Minute Holding Pattern	DANNE ALS 17		EKULY ALS 11		CUXAM ALS 6.1		11000 ALS
	17500	10000	9100	6 NM	4.9 NM		
	322°	142°	142°				
CATEGORY	A	B	C	D			
<b>C</b> CIRCLING	8040-1	500 (500-1)	8080-1½ 540 (600-1½)	8100-2 560 (600-2)			