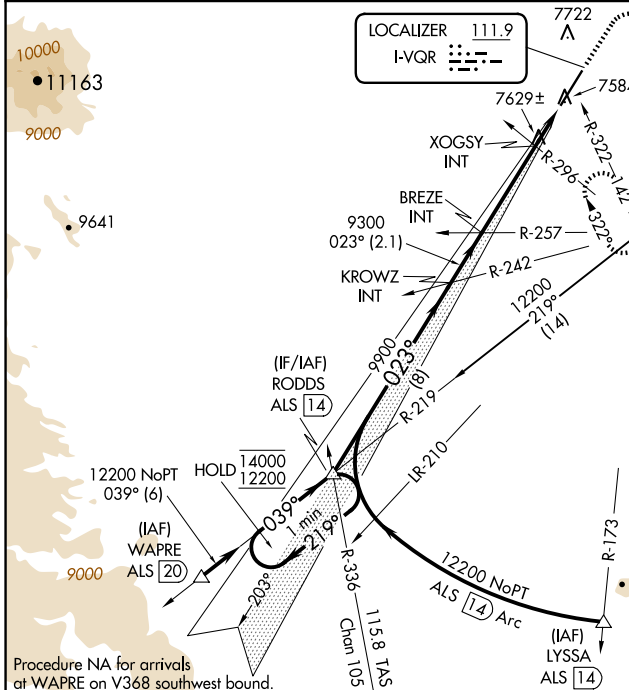


LOC I-VQR 111.9	APP CRS 023°	Rwy ldg 8519 TDZE 7540 Apt Elev 7540
---------------------------	------------------------	--

ILS or LOC RWY 2
SAN LUIS VALLEY RGNL/BERGMAN FLD (ALS)

<p>NA For inop ALS, increase S-LOC 2 Cats C/D visibility to 1 3/8 SM.</p> <p>-26°C</p>	<p>MALSR</p>	<p>MISSED APPROACH: Climb to 8700 then climbing right turn to 11000 direct ALS VORTAC and hold, continue climb in hold to 11000.</p>
--	---------------------	---

ASOS 135.175	DENVER CENTER 128.375 379.95	UNICOM 122.8 (CTAF)
-------------------------------	---	--------------------------------------

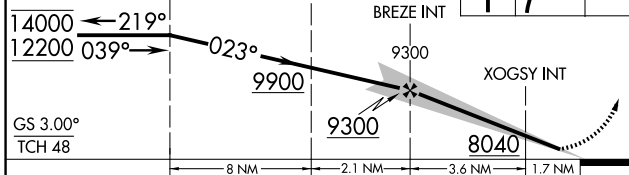


LOCALIZER 111.9
I-VQR

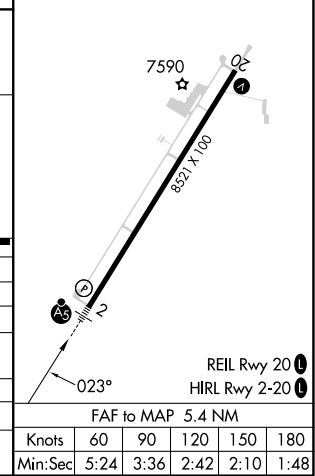
ALAMOSA 113.9 ALS
Chan 86

MSA ALS 25 NM

ELEV 7540 **TDZE 7540**



CATEGORY	A	B	C	D
S-ILS 2	7740-1/2 200 (200-1/2)			
S-LOC 2	8040-1/2 500 (500-1/2)	8040-1 500 (500-1)		
CIRCLING	8040-1 500 (500-1)	8080-1 1/2 540 (600-1 1/2)		8100-2 560 (600-2)
	XOGSY FIX MINIMUMS (DUAL VOR RECEIVERS REQUIRED)			
S-LOC 2	7880-1/2 340 (400-1/2)			
CIRCLING	8040-1 500 (500-1)	8080-1 1/2 540 (600-1 1/2)	8100-2 560 (600-2)	



SW-1, 15 MAY 2025 to 12 JUN 2025

SW-1, 15 MAY 2025 to 12 JUN 2025