

WAAS CH 48917 W22A	APP CRS 225°	Rwy Idg TDZE Apt Elev	4098 1424 1425
----------------------------------------	------------------------	-----------------------------	-------------------------------------------

RNAV (GPS) RWY 22

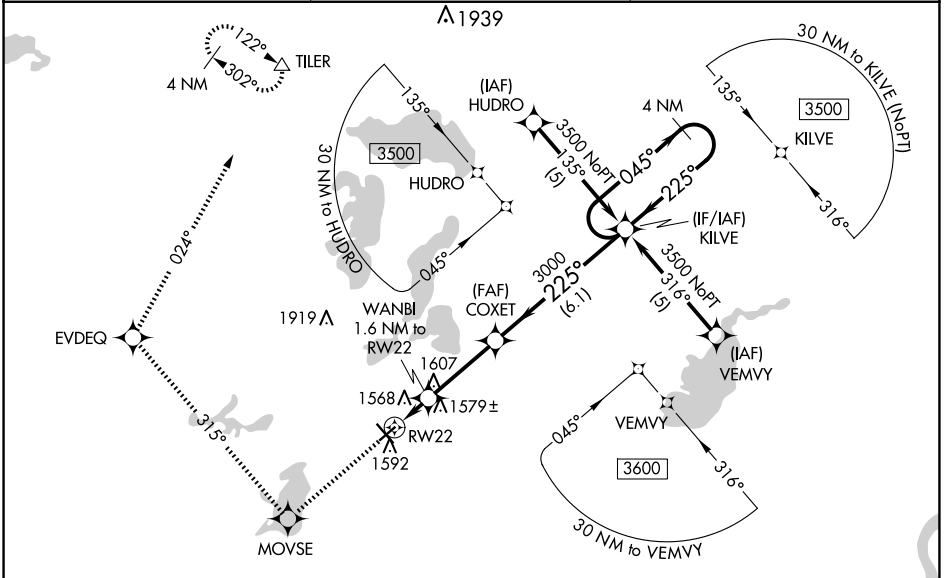
ALEXANDRIA RGNL/CHANDLER FLD (A.XN)

RNP APCH.

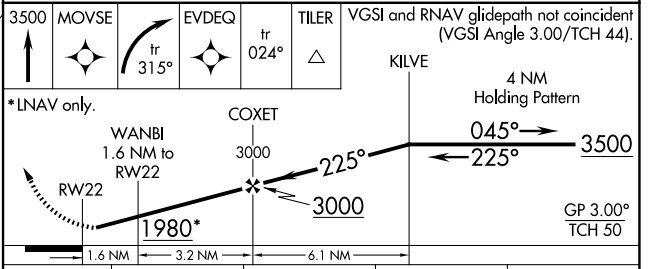
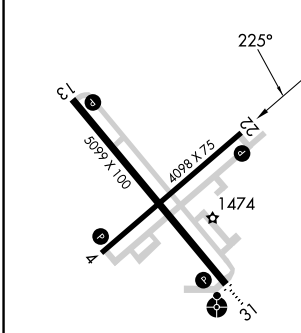
Baro-VNAV NA when using Glenwood altimeter setting. For uncompensated Baro-VNAV systems, LNAV/VNAV NA below -17°C or above 46°C. When local altimeter setting not received, use Glenwood altimeter setting and increase all DA 37 feet and all MDA 40 feet, increase LNAV/VNAV all Cats and LNAV Cat D visibility ¼ mile. Rwy 22 helicopter visibility reduction below ¾ SM NA.

MISSED APPROACH: Climb to 3500 direct MOVE and right turn on track 315° to EVDEQ and on track 024° to TILER and hold.

ASOS 118.375	MINNEAPOLIS CENTER 126.1 269.2	UNICOM 123.0 (CTAF) 0
------------------------	------------------------------------------	---------------------------------



ELEV 1425	TDZE 1424
-----------	-----------



CATEGORY	A	B	C	D
LPV DA	1677-1 253 (300-1)			
LNAV/VNAV DA	1880-1½ 456 (500-1½)			
LNAV MDA	1840-1 416 (500-1)		1840-1¼ 416 (500-1¼)	

REIL Rws 4, 13, and 22 0
MIRL Rws 4-22 and 13-31 0

NC-1, 15 MAY 2025 to 12 JUN 2025

NC-1, 15 MAY 2025 to 12 JUN 2025