

APP CRS	Rwy Idg	10000
214°	TDZE	5316
	Apt Elev	5355

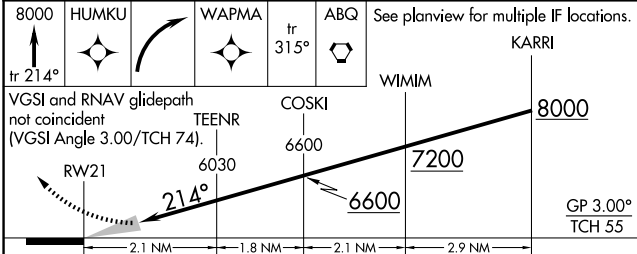
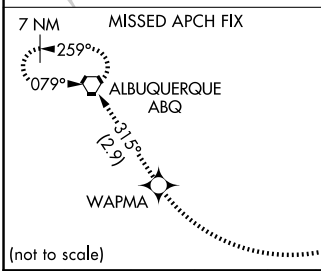
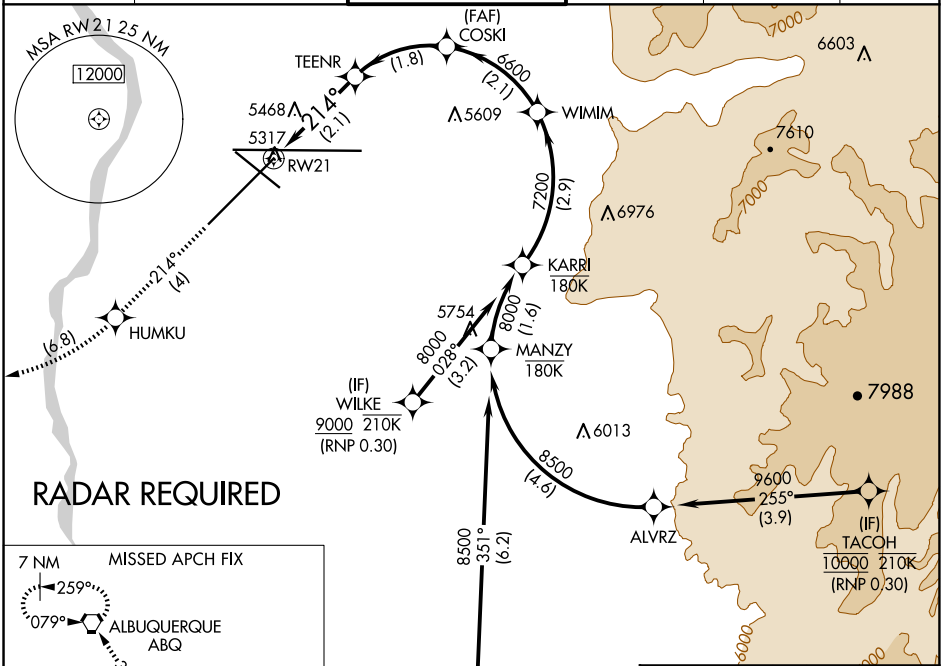
RNAV (RNP) Z RWY 21

ALBUQUERQUE INTL SUNPORT (ABQ)

ASR For uncompensated Baro-VNAV systems, procedure NA below -12°C (11°F) or above 47°C (116°F). RF required. GPS required.

MISSED APPROACH: Climb to 8000 on track 214° to HUMKU, right turn to WAPMA, then on track 315° to ABQ VORTAC and hold.

D-ATIS	ALBUQUERQUE APP CON	ALBUQUERQUE TOWER	GND CON	CLNC DEL	CPDLC
118.0 257.7	123.9 354.1	120.3 351.9	121.9 348.6	119.2 259.3	



ELEV 5355	D	TDZE 5316
-----------	----------	-----------

MRL Rwy 12-30
TDZ/CL Rwy 3 and 8
HIRL Rwy 3-21 and 8-26
REIL Rwy 21, 26, and 30

CATEGORY	A	B	C	D
RNP 0.30 DA		5755-1½	439 (400-1½)	

AUTHORIZATION REQUIRED

SW-1, 15 MAY 2025 to 12 JUN 2025

SW-1, 15 MAY 2025 to 12 JUN 2025