

(LZZRD.LZZRD4) 21336

LZZRD FOUR ARRIVAL (RNAV)

AL-12 (FAA)

ALBUQUERQUE INTL SUNPORT (ABQ)

ALBUQUERQUE, NEW MEXICO

RNAV 1 - DME/DME/IRU or GPS

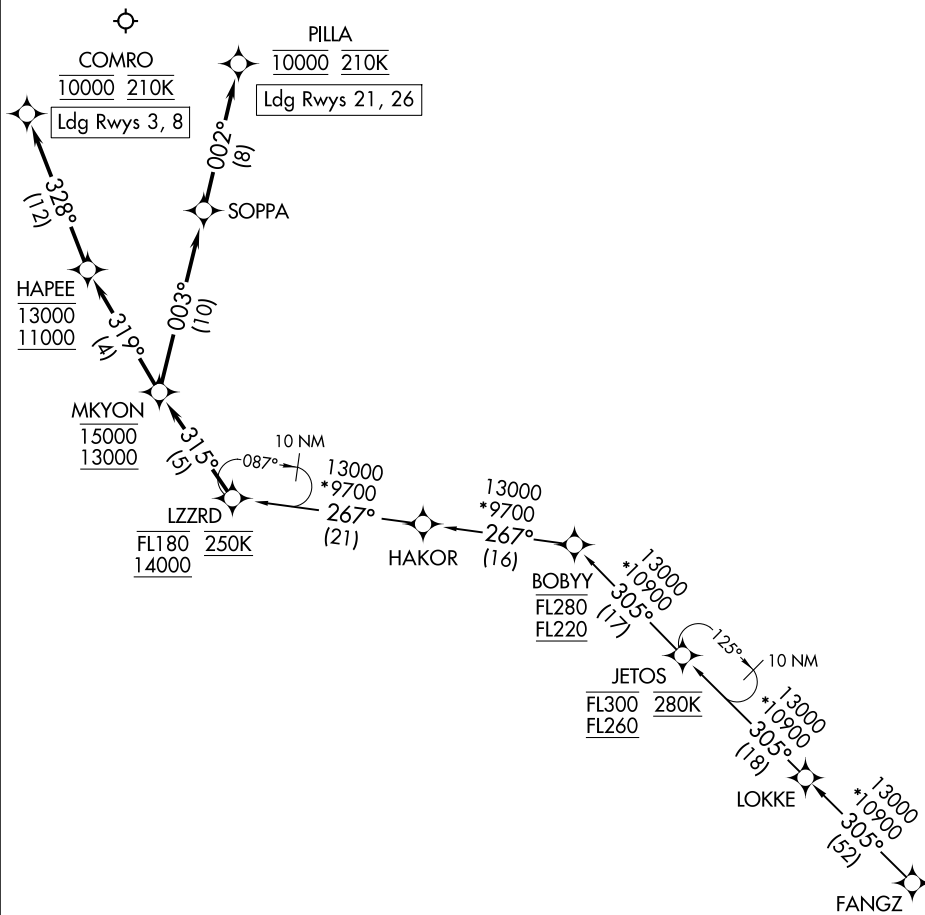
RADAR required.

ALBUQUERQUE APP CON

123.9 354.1

D-ATIS

118.0 257.7



SW-1, 15 MAY 2025 to 12 JUN 2025

SW-1, 15 MAY 2025 to 12 JUN 2025

CAUTION: Glider activity sunrise to sunset; 30 to 50 miles east of KABQ; 17500 feet MSL and below.

NOTE: Turbojet aircraft only.

NOTE: BOBYY transition: ATC assigned only.

NOTE: Landing Rwy 3, 8: expect RADAR vectors to final approach course prior to COMRO.

NOTE: Landing Rwy 21, 26: expect RADAR vectors to final approach course prior to PILLA.

(NARRATIVE ON FOLLOWING PAGE)

NOTE: Chart not to scale.

LZZRD FOUR ARRIVAL (RNAV)

(LZZRD.LZZRD4) 02DEC21

ALBUQUERQUE, NEW MEXICO
ALBUQUERQUE INTL SUNPORT (ABQ)