

HI-TACAN RWY 8

VORTAC ABQ 113.2 Chan 79	APCH CRS 077°	Rwy Idg 12,793	TDZE 5320
		Arprt Elev 5355	

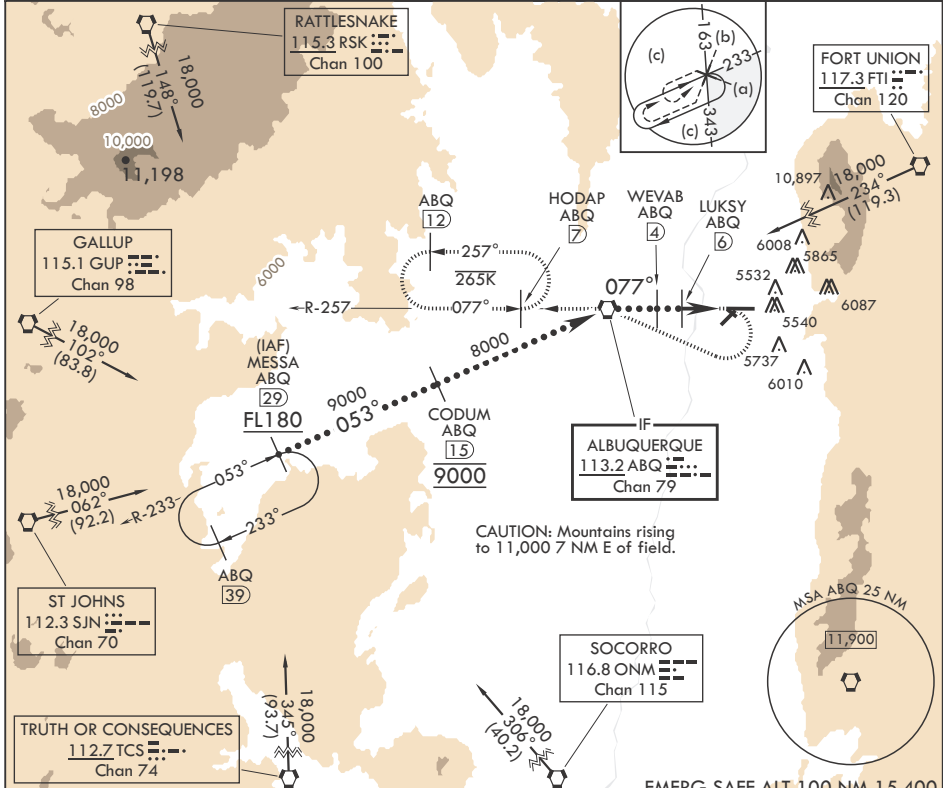
(USAF)

ALBUQUERQUE INTL SUNPORT (KIRTLAND AFB) (KABQ)

⚠ When ALS inop, increase CAT CDE RVR to 55, vis to 1 1/8 miles.
 ** Circling NA for CAT E SE of Rwy 3-21 and NE of Rwy 12-30. When local altimeter is not received, procedure NA.

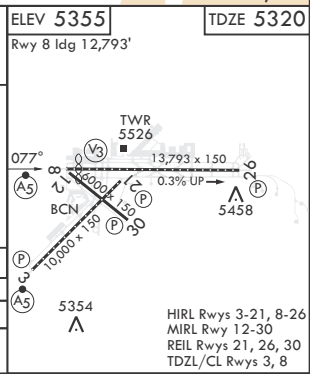
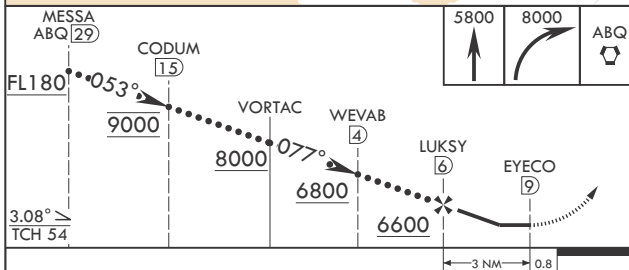
MALSR
 MISSED APPROACH: Climb to 5800 then climbing right turn to 8000 direct ABQ
 VORTAC R-257 to HODAP/ABQ 7 DME and hold.

D-ATIS 118.0 257.7	APP CON/DEP CON 123.9 253.5	TOWER 120.3 351.9	GND CON 121.9 348.6	CLNC DEL 119.2 259.3	ASR
-----------------------	--------------------------------	----------------------	------------------------	-------------------------	-----



CAUTION: Mountains rising to 11,000 7 NM E of field.

EMERG SAFE ALT 100 NM 15,400



CATEGORY	C	D	E
S-8*	5700/35	380	(400-%)
Ⓢ CIRCLING**	5920-1½ 565 (600-1½)	6460-3	1105 (1200-3)

HIRL Rwy 3-21, 8-26
 MIRL Rwy 12-30
 REIL Rwy 21, 26, 30
 TDZL/CL Rwy 3, 8

HI-TACAN RWY 8

SW-1, 15 MAY 2025 to 12 JUN 2025

SW-1, 15 MAY 2025 to 12 JUN 2025