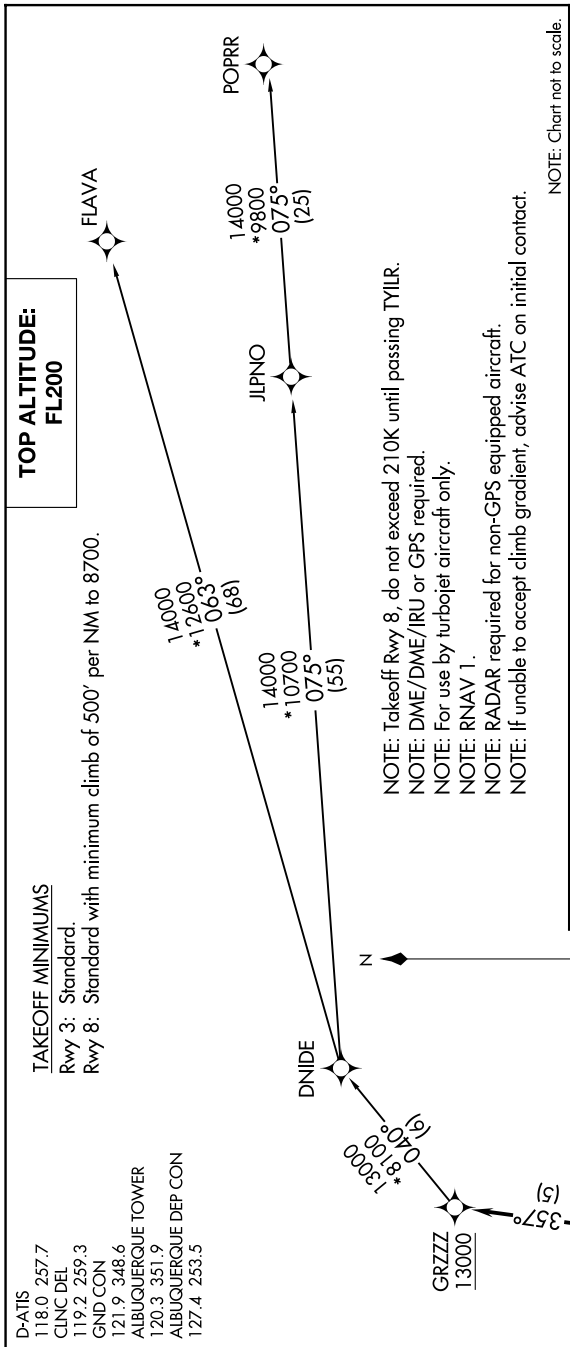


GRZZ FOUR DEPARTURE (RNAV)

AL-12 (FAA)

ALBUQUERQUE INTL SUNPORT (ABQ)
ALBUQUERQUE, NEW MEXICO

SW-1, 15 MAY 2025 to 12 JUN 2025



NOTE: Chart not to scale.

DEPARTURE ROUTE DESCRIPTION

TAKEOFF RUNWAY 3: Climb on heading 034° to 5860, then left turn direct ROWHO, then on track 357° to cross GRZZ at or above 13000, thence

TAKEOFF RUNWAY 8: Climb on heading 079° to 5860 and direct TYILR at or above 5900, then left turn direct ROWHO, then on track 357° to cross GRZZ at or above 13000, thence

. . . . (transition). Maintain FL200, expect filed altitude ten minutes after departure.

FLAVA TRANSITION (GRZZ4.FLAVA)

JLPNO TRANSITION (GRZZ4.JLPNO)

POPRR TRANSITION (GRZZ4.POPRR)

TAKEOFF MINIMUMS
Rwy 3: Standard.
Rwy 8: Standard with minimum climb of 500' per NM to 8700.

- D-ATIS 118.0 257.7
- CLNC DEL 119.2 259.3
- GND CON 121.9 348.6
- ALBUQUERQUE TOWER 120.3 351.9
- ALBUQUERQUE DEP CON 127.4 253.5

GRZZ FOUR DEPARTURE (RNAV)

ALBUQUERQUE, NEW MEXICO
ALBUQUERQUE INTL SUNPORT (ABQ)

SW-1, 15 MAY 2025 to 12 JUN 2025