

ADYOS THREE DEPARTURE (RNAV)

AL-12 (FAA)

ALBUQUERQUE INTL SUNPORT (ABQ)
ALBUQUERQUE, NEW MEXICO

SW-1, 15 MAY 2025 to 12 JUN 2025

D-ATIS 118.0 257.7
 CLNC DEL 119.2 259.3
 CPDC 121.9 348.6
 GND CON 120.3 351.9
 ALBUQUERQUE TOWER 127.4 253.5
 ALBUQUERQUE DEP CON



DEPARTURE ROUTE DESCRIPTION

TAKEOFF RUNWAY 21: Climb heading 214° to 5860, then direct ASTAH, cross ASTAH at or below 9000, then on depicted route to ADYOS. Thence. . . .

TAKEOFF RUNWAY 26: Climb heading 259° to 5860, then direct ABQ VORTAC, then on track 262° to ADYOS. Thence. . . .

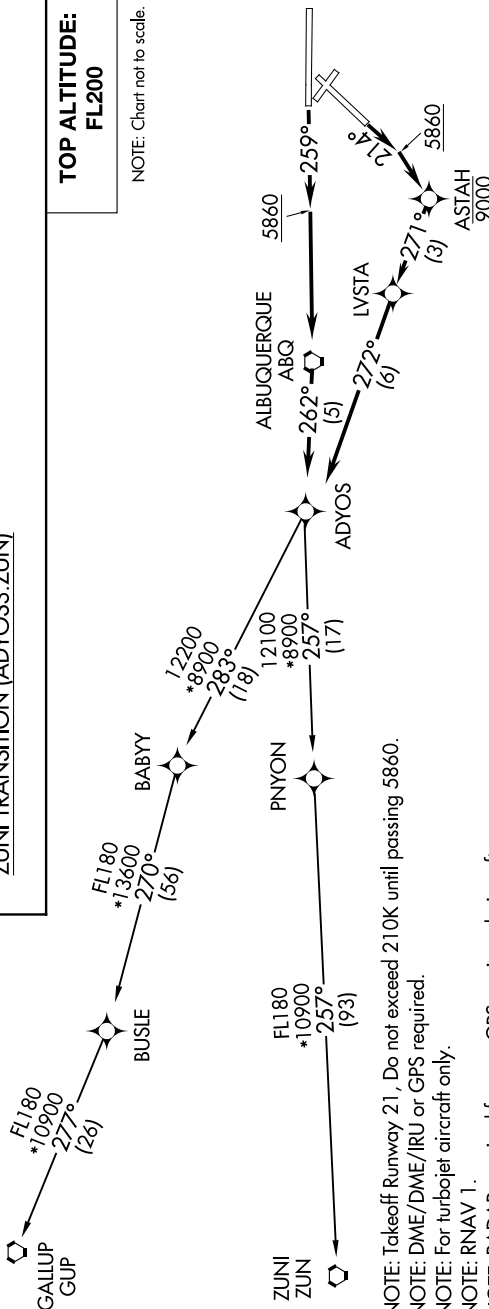
. . . (transition). Maintain FL200, expect filed altitude ten minutes after departure.

GALLUP TRANSITION (ADYOS3.GUP)

ZUNI TRANSITION (ADYOS3.ZUN)

**TOP ALTITUDE:
FL200**

NOTE: Chart not to scale.



NOTE: Takeoff Runway 21, Do not exceed 210K until passing 5860.

NOTE: DME/DME/IRU or GPS required.

NOTE: For turbojet aircraft only.

NOTE: RNAV 1.

NOTE: RADAR required for non-GPS equipped aircraft.

NOTE: If unable to accept climb gradient, advise ATC on initial contact.

NOTE: For non-GPS equipped aircraft on: GUP Transition: ABQ and ONM DME's must be operational.

NOTE: For non-GPS equipped aircraft on: ZUN Transition: ABQ and ONM DME's must be operational.

TAKEOFF MINIMUMS

Rwy 21/26: Standard with minimum climb of 500' per NM to 5860.

ADYOS THREE DEPARTURE (RNAV)

SW-1, 15 MAY 2025 to 12 JUN 2025