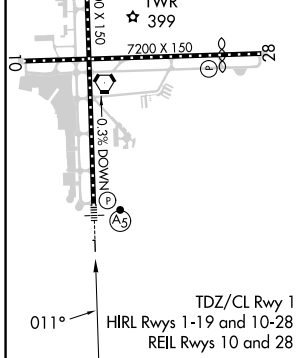
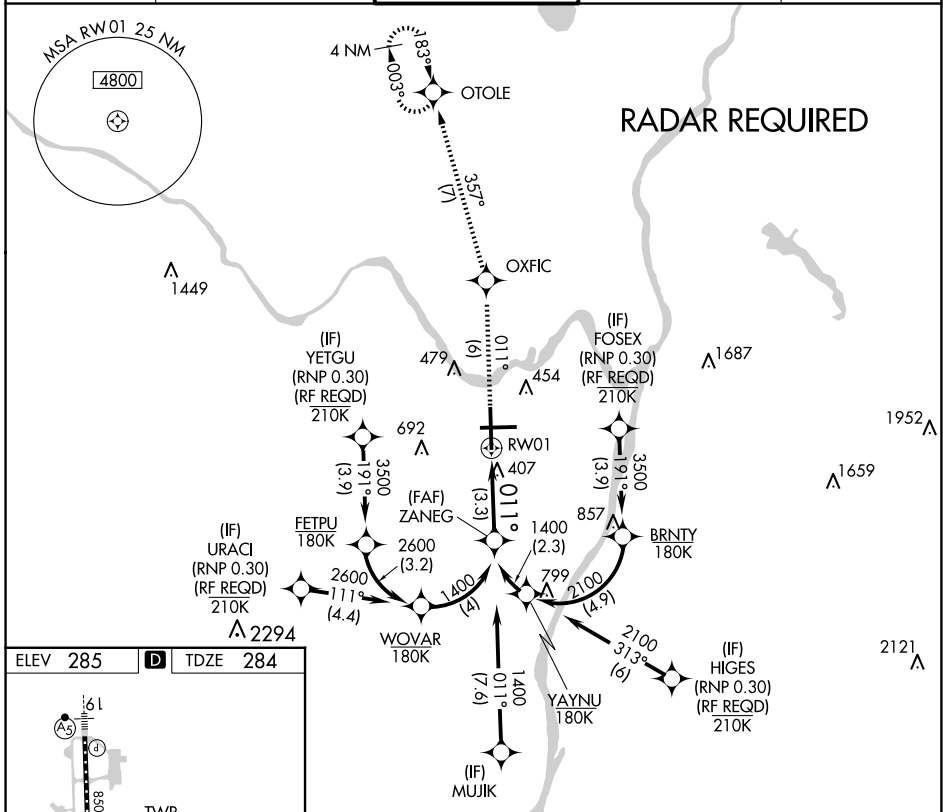


APP CRS <b>011°</b>	Rwy ldg TDZE Apt Elev	<b>8500</b> <b>284</b> <b>285</b>
------------------------	-----------------------------	---

# RNAV (RNP) Z RWY 1

ALBANY INTL (ALB)

D-ATIS <b>120.45</b>	ALBANY APP CON <b>132.825 307.2</b>	ALBANY TOWER <b>119.5 257.8</b>	GND CON <b>121.7 348.6</b>	CLNC DEL <b>127.50</b>	GPS required. For uncompensated Baro-VNAV systems, procedure NA below -15°C (3°F) or above 47°C (117°F). For inoperative MALSR, increase RNP 0.15 visibility to 1½ and RNP 0.30 visibility to 1½.	MALSR 	MISSED APPROACH: Climb to 3000 on track 011° to OXFIC and on track 357° to OTOLE and hold.



3000	OXFIC	OTOLE	ZANEG
↑	tr 011°	tr 357°	1400
See planview for multiple IF locations.			
RW01			GP 3.00° TCH 56

CATEGORY	A	B	C	D
RNP 0.15 DA		656/40	372 (400-¾)	
RNP 0.30 DA		727/50	443 (500-1)	

**AUTHORIZATION REQUIRED**

NE-2, 15 MAY 2025 to 12 JUN 2025

NE-2, 15 MAY 2025 to 12 JUN 2025