

TACAN W RWY 34

TACAN DYS Chan 63	APCH CRS 338°	Rwy Idg 13,500 TDZE 1788 Arprt Elev 1790
-----------------------------	-------------------------	---

AL-2 [USAF]

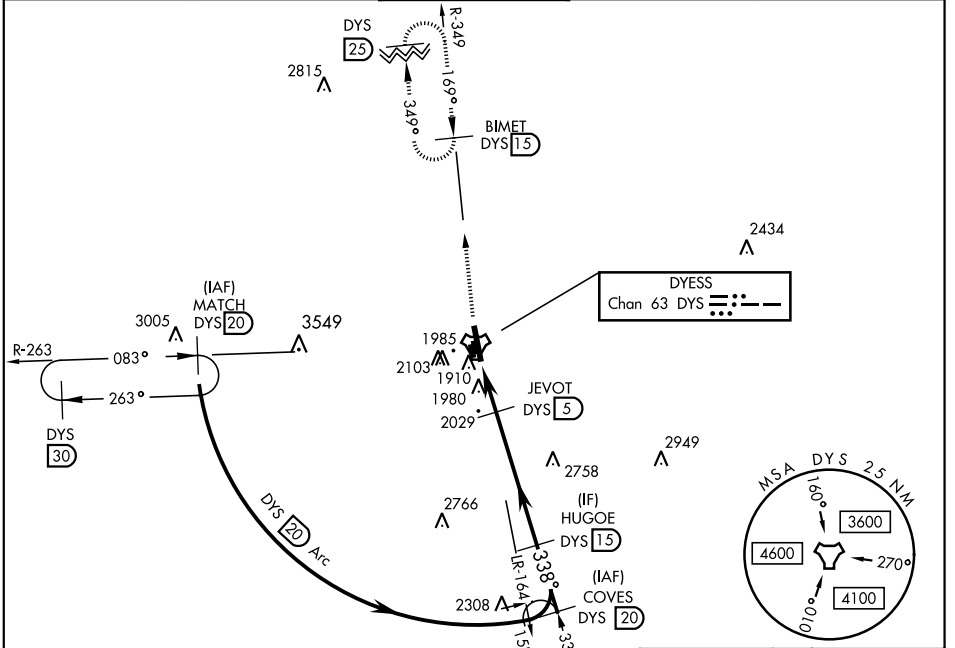
DYESS AFB (KDYS)

* When ALS inop, increase CAT AB RVR to 55 and vis to 1 mile, CAT CDE vis to 1 1/8 miles.
 ** Circling to other than RWY 16 NA



MISSED APPROACH: Climb to 4000 via
 DYS TACAN R-349 to BIMET and hold.

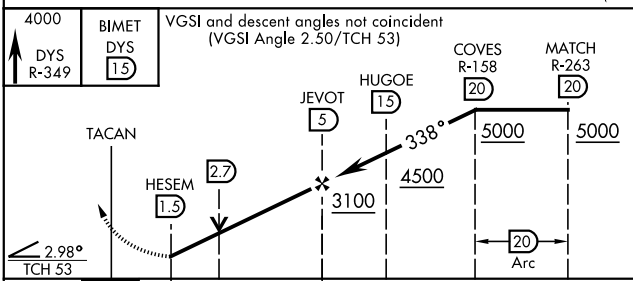
ATIS ★ 269.175	ABILENE APP CON 125.0 338.3 EAST 127.2 282.3 WEST	DYESS TOWER 133.0 257.675	GND CON 118.35 275.8	ASR
--------------------------	---	-------------------------------------	--------------------------------	-----



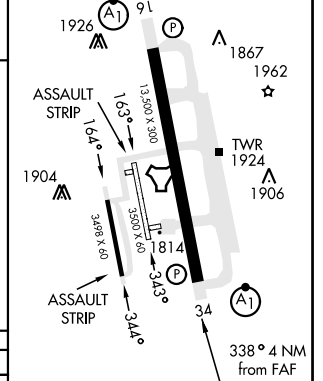
SC-2, 15 MAY 2025 to 12 JUN 2025

SC-2, 15 MAY 2025 to 12 JUN 2025

EMERG SAFE ALT 100 NM 4600



ELEV 1790	TDZE 1788
LIRL Rwy 164°-344° HIRL Rwy 16-34	



CATEGORY	A	B	C	D	E
S-34 *	2280/24 492 (500-1/2)		2280/50 492 (500-1)		
CIRCLING **	2300-1 510 (600-1)	2320-1 530 (600-1)	2460-1 1/4 670 (700-1 3/4)	2460-2 670 (700-2)	2460-2 1/4 670 (700-2 1/4)

FAF to MAP 3.5 NM					
Knots	60	90	120	150	180
Min:Sec	3:30	2:20	1:45	1:24	1:10

TACAN W RWY 34