

ABILENE, TEXAS

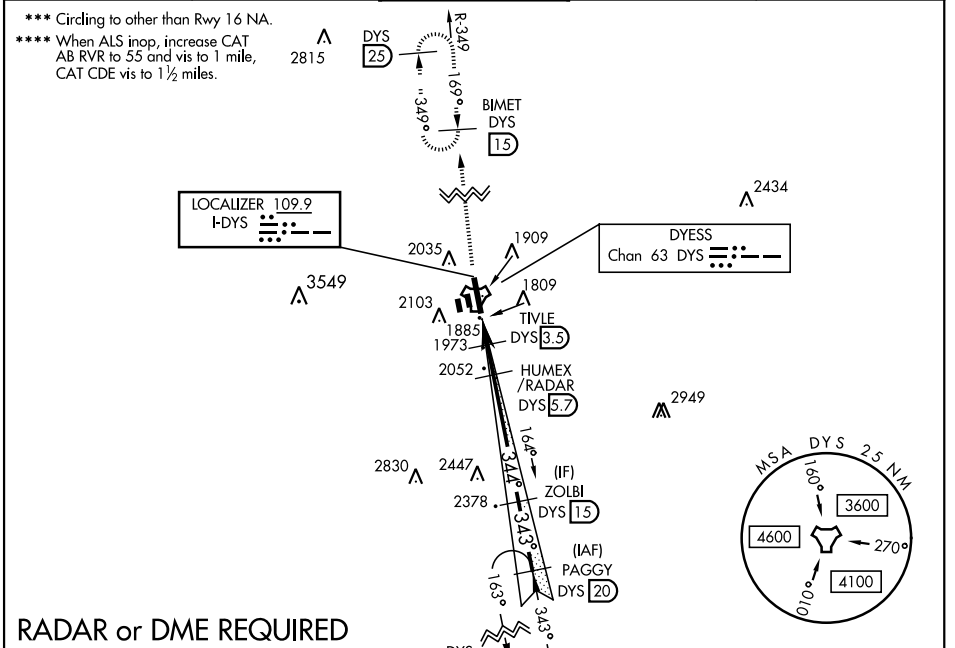
ILS or LOC W RWY 34

LOC I-DYS 109.9	APCH CRS 344°	Rwy Idg 13,500 TDZE 1788 Arprt Elev 1790	AL-2 [USAF]	DYESS AFB (KDYS)
----------------------------------	--------------------------------	--	-------------	------------------

* When ALS inop, increase all CAT RVR to 40 and vis to ¾ mile.
 ** When ALS inop, increase CAT AB RVR to 55 and vis to 1 mile, CAT CDE vis to 1 ½ miles.

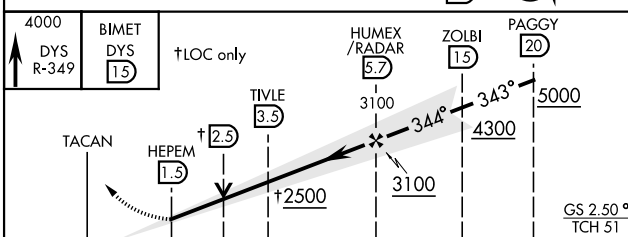
MISSED APPROACH: Climb to 4000 via DYS TACAN R-349 to BIMET and hold.

ATIS * 269.175	ABILENE APP CON 125.0 338.3 EAST 127.2 282.3 WEST	DYESS TOWER 133.0 257.675	GND CON 118.35 275.8	ASR
---------------------------------	--	--	---------------------------------------	-----

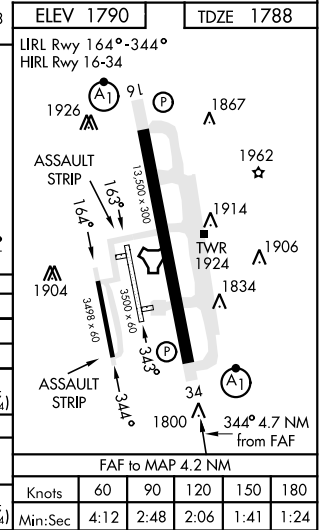


RADAR or DME REQUIRED

EMERG SAFE ALT 100 NM 4600



CATEGORY	A	B	C	D	E
S-ILS 34*	1988/24		200	(200-½)	
S-LOC 34**	2240/24	452 (500-½)	2240/45	452 (500-¾)	
CIRCLING***	2300-1	2320-1	2460-1¾	2460-2	2460-2¼
	510 (600-1)	530 (600-1)	670 (700-1¾)	670 (700-2)	670 (700-2¼)
WITHOUT LAST STEPDOWN FIX					
S-LOC 34****	2320/24	532 (600-½)	2320/55	532	(600-1)
CIRCLING***	2320-1	530 (600-1)	2460-1¾	2460-2	2460-2¼
			670 (700-1¾)	670 (700-2)	670 (700-2¼)



ABILENE, TEXAS

32°25'N-99°51'W

DYESS AFB (KDYS)

Amtd 4 10NOV16

ILS or LOC W RWY 34

SC-2, 15 MAY 2025 to 12 JUN 2025

SC-2, 15 MAY 2025 to 12 JUN 2025