

HI-TACAN X RWY 34

TACAN Chan 63	DYS	APCH CRS 338°	Rwy ldg 13,500 TDZE 1788 Arprt Elev 1790
-------------------------	-----	-------------------------	---

JAL-2 [USAF]

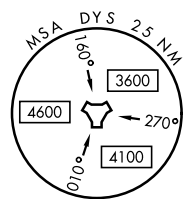
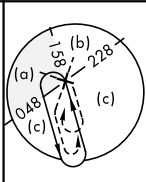
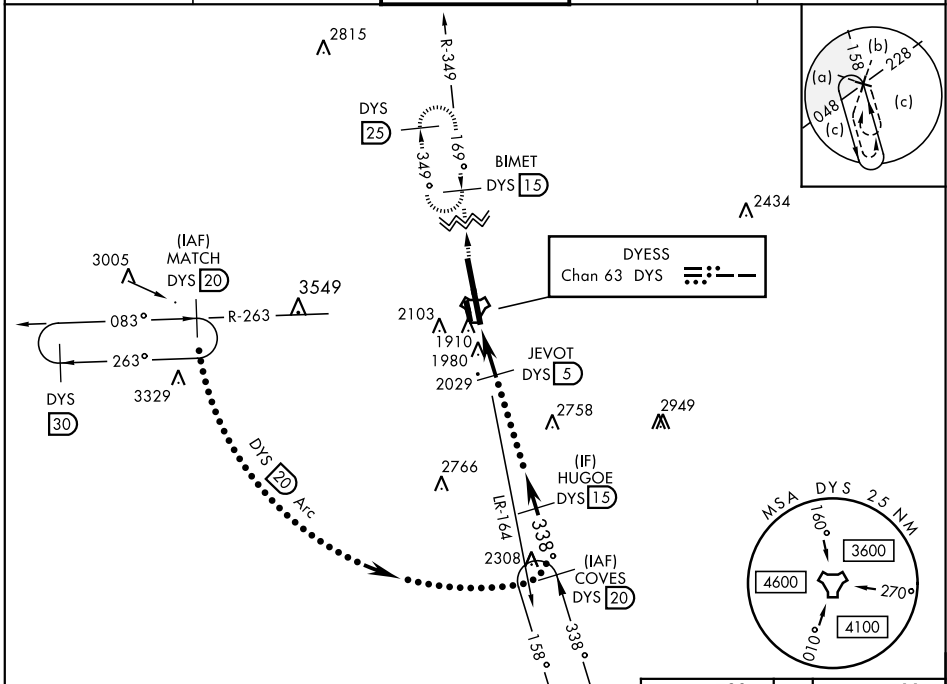
DYESS AFB (KDYS)

* When ALS inop, increase CAT CDE vis to 1 3/8 miles.
 ** Circling to other than Rwy 16 NA.

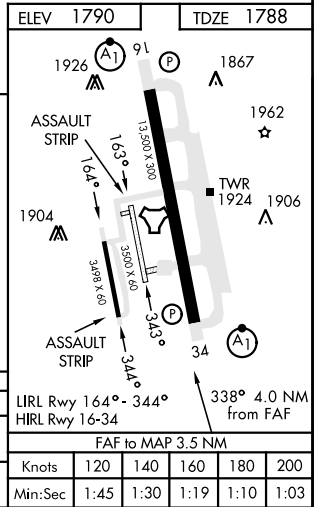
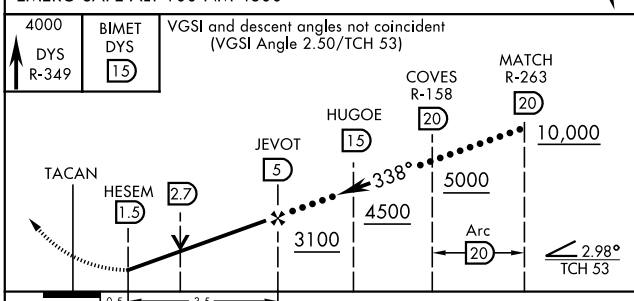


MISSED APPROACH: Climb to 4000 via
 DYS TACAN R-349 to BIMET and hold.

ATIS ★ 269.175	ABILENE APP CON 125.0 338.3 EAST 127.2 282.3 WEST	DYESS TOWER 133.0 257.675	GND CON 118.35 275.8	ASR
--------------------------	---	-------------------------------------	--------------------------------	-----



EMERG SAFE ALT 100 NM 4600



CATEGORY	C	D	E
S-34 *	2280/50	492	(500-1)
CIRCLING **	2460-1 3/4 670 (700-1 3/4)	2460-2 670 (700-2)	2460-2 1/4 670 (700-2 1/4)

HI-TACAN X RWY 34

SC-2, 15 MAY 2025 to 12 JUN 2025

SC-2, 15 MAY 2025 to 12 JUN 2025