


HI-ILS or LOC X RWY 16

LOC I-TYY 109.9	APCH CRS 164°	Rwy Idg 13,500 TDZE 1790 Arprt Elev 1790	AL-2 [USAF]	DYESS AFB (KDYS)
---------------------------	-------------------------	---------------------------------------------------------------------	-------------	------------------

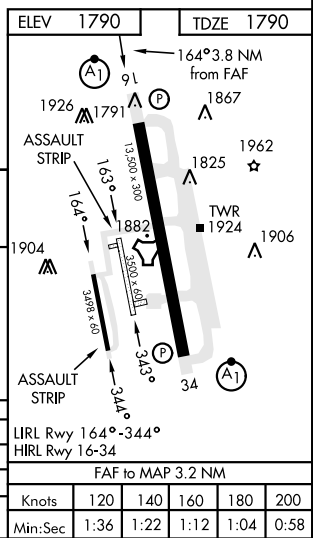
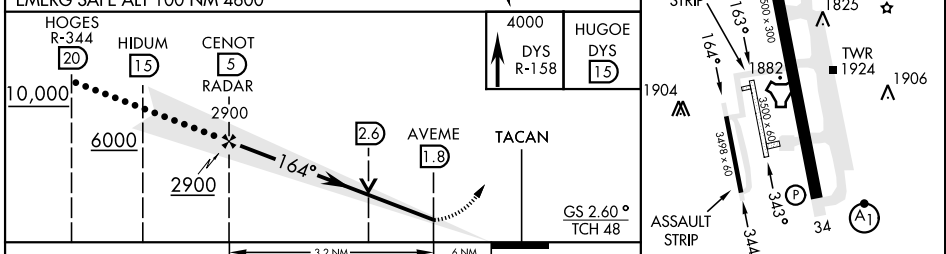
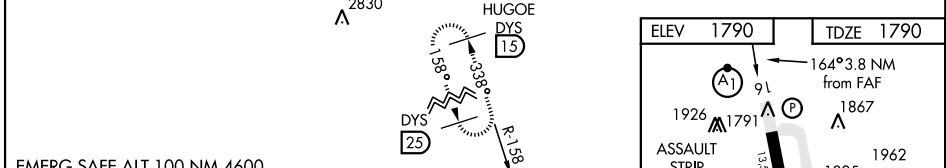
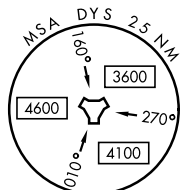
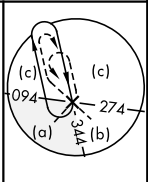
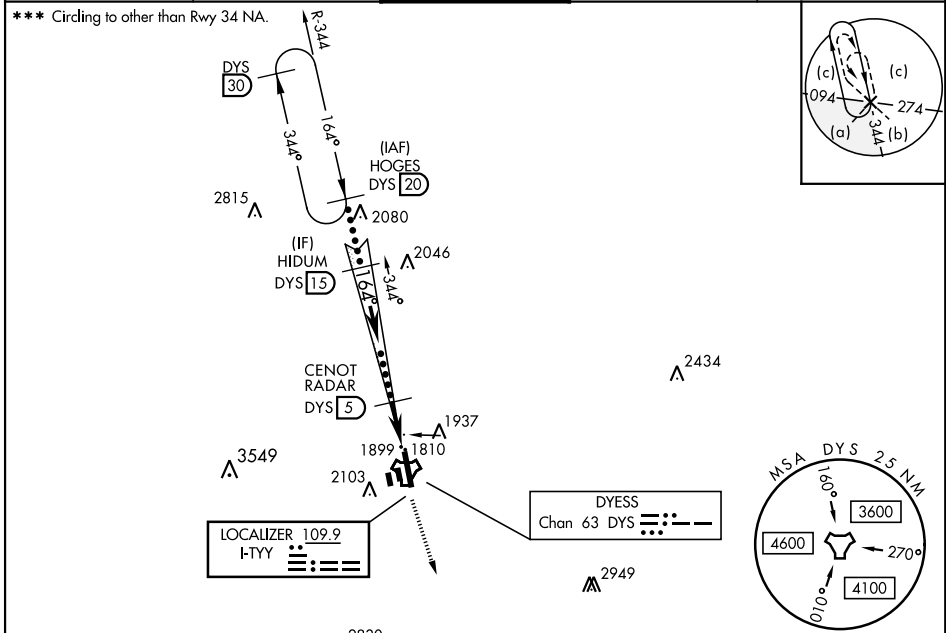
RADAR or DME required.

* When ALS inop, increase CAT CDE RVR to 40 and vis to ¾ mile.
 ** When ALS inop, increase CAT CDE RVR vis to 1 ¼ miles.

ALSF-1 

MISSED APPROACH: Climb to 4000 via DYS TACAN R-158 to HUGOE and hold.

ATIS ★ 269.175	ABILENE APP CON 125.0 338.3 EAST 127.2 282.3 WEST	TOWER 133.0 257.675	GND CON 118.35 275.8	ASR
--------------------------	-----------------------------------------------------------------------	-------------------------------	--------------------------------	-----



CATEGORY	C	D	E
S-ILS 16 *	1990/24	200	(200-½)
S-LOC 16 **	2220/40	430	(500-¾)
*** CIRCLING	2460-1¾ 670 (700-1¾)	2460-2 670 (700-2)	2460-2¼ 670 (700-2¼)

HI-ILS or LOC X RWY 16

SC-2, 15 MAY 2025 to 12 JUN 2025

SC-2, 15 MAY 2025 to 12 JUN 2025